

SEPTEMBER/OCTOBER

# GET THE DEAL

LANCASHIRE

Preston City Edition Fulwood, Cottam, Broughton, Grimsargh and the surrounding areas.  
South Ribble Edition Penwortham, Hutton, Longton and the surrounding areas.  
Bringing you the best, local deals through your letterbox.



  
**OPTICIANS**  

---

**PENWORTHAM**

**DAVID H MYERS**

**01772 752400**

34 Liverpool Road, Penwortham, Preston PR1 0DQ



GREAT  
VALUE  
GREAT  
QUALITY  
GREAT  
SERVICE

SPECIALISTS IN CONSERVATORIES,  
ORANGERIES, DOORS & WINDOWS



WALKER WINDOWS

## WALKER WINDOWS

A top- quality job for an affordable price – that's what you get from Walker Windows, a family firm that has been serving Lancashire with integrity for more than 122 years.

And now you can see what you would be getting – in brand new 3,000 sq ft showroom at the Walker's family's dockland headquarters.

The showroom has a **wide selection** of windows and doors, roof systems, a real orangery, roofline products and much more.

- Professional friendly service
- Talk to a family member, not a sales person
- Free quotations
- The family firm customers have trusted for over 120 years



**NEW**  
**3,000** SQ  
FT  
**SHOWROOM**



Dockland House, Anchorage Business Park, Chain Caul Way, Riversway, Preston, PR2 2YL

**Tel: 01772 725888**

[www.walkerwindows.co.uk](http://www.walkerwindows.co.uk)



# GET THE DEAL

LANCASHIRE

## *A big hello to all our readers!*

There's no doubt that this year is turning out to be a bizarre one, so we hope we can bring some normality into your homes and that you will enjoy the read.

In this issue, we're looking at how local businesses are faring as they adapt to the "new normal". Some businesses have had a pretty rough ride so we're encouraging everyone to use their local shops, suppliers and traders. As stated in the magazine, "if we don't use them, we might lose them".

We put the spotlight on some local companies who are coming up with new products and new ways of working to ensure they can bring the best products and services to customers. And we take a virtual walk around the countryside of Haighton, with a little potted history of the manor house thrown in.

There's a new team behind Get the Deal and we're delighted at Euromedia Associates Ltd to be publishing the magazine.

Please get in touch with your news and views, and if advertisers would like to feature in the next issue please email [hello@getthedeallancashire.co.uk](mailto:hello@getthedeallancashire.co.uk).



Get the Deal Lancashire is published by Euromedia Associates Ltd, 10 Ashfield Road, Chorley PR7 1LJ

Managing Director: Emma Hatherall | Sales: Rachel Morton, Jessica Leehair | Production Manager: Sheila Helm | Creative Design: Nikki Carter | Editor: Victoria Galligan

T: 01257 267677 | F: 01257 267711 | Editorial e-mail: [hello@getthedeallancashire.co.uk](mailto:hello@getthedeallancashire.co.uk) | Advertising e-mail: [hello@getthedeallancashire.co.uk](mailto:hello@getthedeallancashire.co.uk)

*Get the Deal Magazine would like to thank the advertisers that appear in this publication for their support and wish them continued success. The views expressed in Get the Deal Magazine do not necessarily reflect those of the publisher, Euromedia Associates Ltd and employees. Similarly the efficacy of any products and services featured are the sole responsibility of the supplier / manufacturer. The editor's articles are not the responsibility of Euromedia Associates Limited*



# Cafe culture in 2020

We explore how Preston's cafes and restaurants have been coping since the lockdown restrictions began to ease...



There's no doubt that this year has been tough for traders in Preston. When the coronavirus lockdown struck in March, there was little businesses could do apart from close their doors or, if deemed as an "essential" service, change the way they worked and implement the government's new guidance on social distancing.

#### **New ways of working**

One of the biggest industries to be affected was the hospitality industry. Pubs had to close their doors. Some eateries were able to offer a take-out or home delivery service and carry on trading via a socially distanced new way of working. These businesses offered a real lifeline to the people of Preston as takeaways buoyed our spirits and, in some cases, kept the tummy rumbles at bay when the supermarket queues could just not be faced.

Since July 4th, cafes and restaurants have been allowed to trade, albeit with restrictions in the

number of people allowed inside. With one-way systems past the counter and mask-wearing encouraged at the bar, with cleanliness routines ramped up and hand sanitizer available at every turn, socially-distant eating out became a welcome distraction from lockdown life.

#### **Getting back to business**

This allowed many of us feel "normal" again and for the food and drink industry to boost their coffers over summer. Albeit with a reported 40% drop in the usual takings in early July, according to consultancy GCA.

The Eat Out to Help Out scheme got more and more people to book tables and pop out for coffee, with 50% off food and soft drink bills being welcomed by customers and (most) traders alike. The food and drink scene in Preston began to show signs of recovery, at last.

#### **A turn for the worse**

Then, from August 7 local lockdown restrictions

meant that different households could no longer meet up in indoor cafes, pubs or restaurants.

Other restrictions meant people became more wary of how they socialised and who with – and for good reason. We have all had to do our bit to stop the spread of the pandemic.

However, this rollercoaster ride has showed no signs of slowing down. Only one thing's for sure. Food and drink businesses in Preston can only survive if we use them. But how can we do that safely, while abiding with the social distancing guidance?

### **Take away your favourite cafe treat**

If you're still not comfortable about going into a cafe and eating, that's totally understandable. But many cafes are offering a takeaway service where you can wear a mask and pay at the counter, and enjoy your treats back in the car or at work or home. It's no different to popping into a shop when you consider the risks.

### **Use outdoor spaces**

Or, you could opt to sit outside. If your favourite cafe has an outdoor seating area, take advantage of it and get back to enjoying your regular coffee and cake. Alternatively, this is the perfect excuse to wrap up warm and head to your local park. Enjoy Preston's fantastic green spaces, reconnect with nature and satisfy your sweet tooth with a hot chocolate and a brownie. Think of the benefits for you

mental health – and you can walk off the calories by taking the long way home.

### **Order a delivery**

Delivery services are being offered by many local cafes now – give them a call or download a food delivery app such as JustEat, Uber Eats or Deliveroo and tap into the tap-and-eat culture which is now so popular.

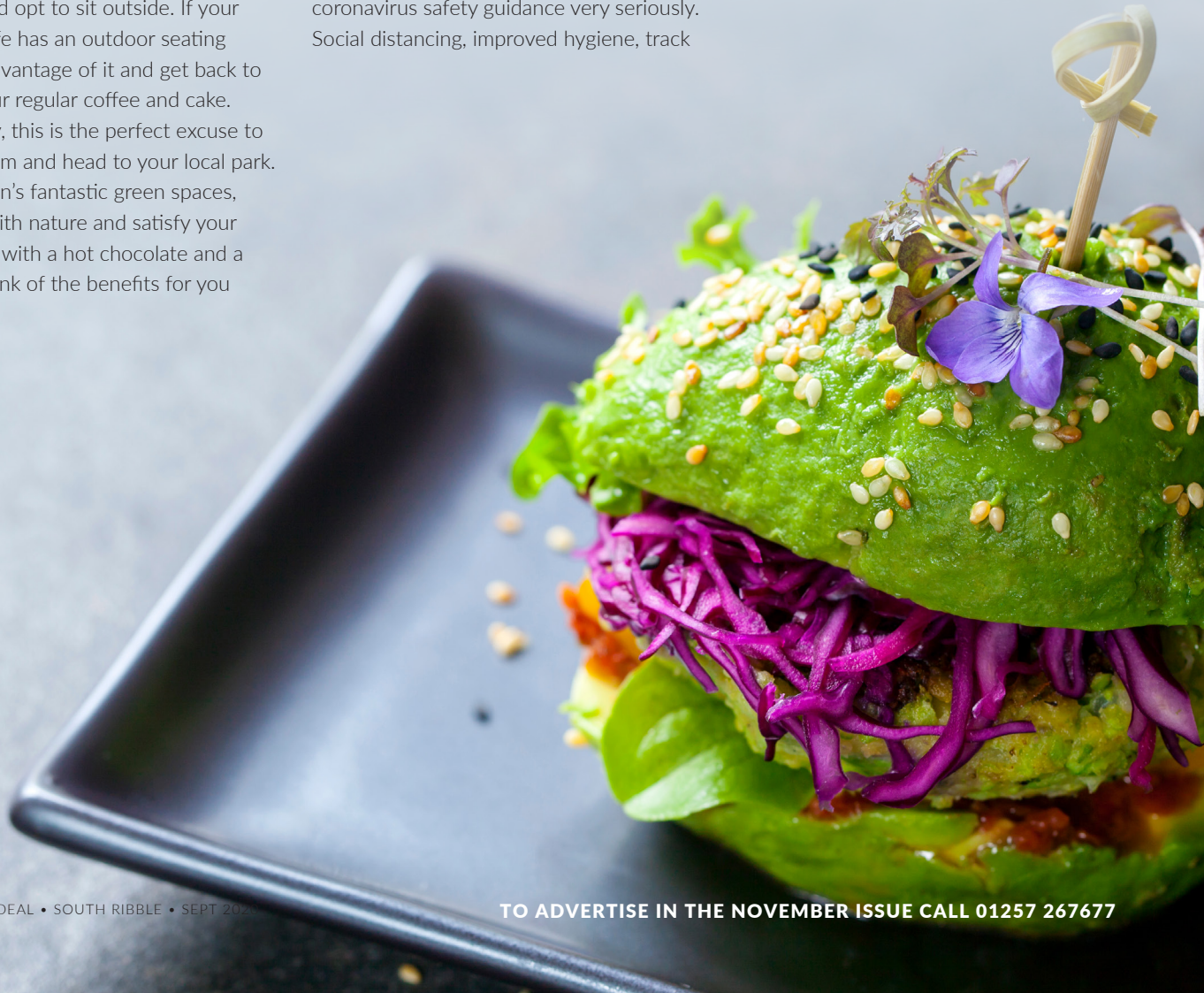
If you haven't used this method of ordering food before, I can fully recommend it. You just link your app to a bank card, enter your address details and your information is saved. Then every time you feel like a treat, just open the app and get ordering. There's lots of choice, from fried breakfasts to milkshakes and desserts. And you can read the reviews first to see which are the best-rated eateries.

### **Show your support for local traders**

If you're planning on venturing down to your local cafe soon, rest assured that most businesses (obviously there have been exceptions!) are taking the coronavirus safety guidance very seriously. Social distancing, improved hygiene, track

and trace, Perspex screens and face masks at the till are all helping cafes to protect customers and staff alike.

So however you access your local cafe this autumn, you can do it with confidence and be safe in the knowledge that you're helping a local business to keep afloat. After all, if we don't use them, we might just lose them.



# *Discover...*

# *Haighton*

If you've never been to Haighton, you're missing out on a hidden local beauty spot.

This area is a favourite among walkers and diners visiting Haighton Manor, with many whiling away an afternoon reconnecting with nature and discovering the lush green fields and woodlands which surround the area.

#### **Where is Haighton?**

Haighton is a parish which lies to the north east of Preston city. This picturesque rural area contains the hamlets Haighton Green and Haighton Top. Despite its rural surroundings, it is close to the M6 and junction of the M55, which makes it accessible for visitors.

Once earmarked to become a suburb of the "Central Lancashire New Town", which would have increased the population to nearly 30,000 people, the village no doubt breathed a sigh of relief when development plans were abolished. Haighton remains a sparsely-populated area, with just 202 people living there in 2011.

#### **What is Haighton Manor?**

Formerly listed as "Haighton House", the Manor's history goes back to the 1650s. The grand sandstone building was owned by the Hoghton family of Hoghton Tower. Later, it was owned by the Cardwell, Loxam and Haighton families among others. Eventually the Manor was leased to Whittingham Asylum and in 1910 the committee bought the property. Whittingham Asylum, later Whittingham Hospital, originally housed patients who worked on the 104 acres of land. In the 1950s the hospital

was known for its groundbreaking work with women who were suffering from post-natal depression. A restaurant since the early 70s, Haighton Manor is now a popular venue for fine dining. Wedding receptions used to be held there but it's now an impressive country pub. Brunning & Price (the current owners) added a garden room to the side to take advantage of the stunning views. Nowadays the restaurant offers a click and collect service, a gluten-free menu and sumptuous Sunday roasts.

#### **Can walkers explore the area?**

Yes! This area is a historic place rich in cultural hidden gems and well worth an afternoon's walk. Easily reachable from Fulwood, just walk through Hindley Hill Woods, cross the motorway from the Anderton Pub area you can trek over farmland at Ladyewell -where there's an ancient sacred well which is now a Catholic shrine. Follow Savick Brook through Fulwood Park Wood and head past Mary's Church at Fernyhalgh. Then walk eastwards through Haighton Green and carry on over to Haighton Manor for a well-earned feed. For those with even more energy to burn, Whittingham and Goosnargh are just up the road and offer more pubs, shops and cafes to peruse before you head back home. Check out website like MapMyWalk.com or AllTrails.com to find out how you can explore the Haighton area.



# HOMEMATAS

**KITCHENS BEDROOMS BATHROOMS TILES**

**KITCHENS, BEDROOMS, BATHROOMS & TILES  
ALL HIGH QUALITY, AFFORDABLE PRODUCTS**



▶ **Made to measure  
high quality bedrooms**



**AUTUMN OFFER  
10% OFF**  
valid until  
1st December 2020

▶ **Stunning brand-new bedroom  
showroom now open**



▶ **High quality kitchens**



▶ **10 stunning fixed displays  
in store**



▶ **Exceptional quality carcasses  
and doors**

Vitro Burlington BRITTON®

CISA CERAMICHE  
PER PASSIONE DAL 1934

PALIO  
CLIC  
by Karndean

PORCELANOSA

BOSCH

NEFF

CDA  
Built for your life



**t 01772 311 113**  
**e enquiries@homematas.co.uk**  
**www.homematas.co.uk**

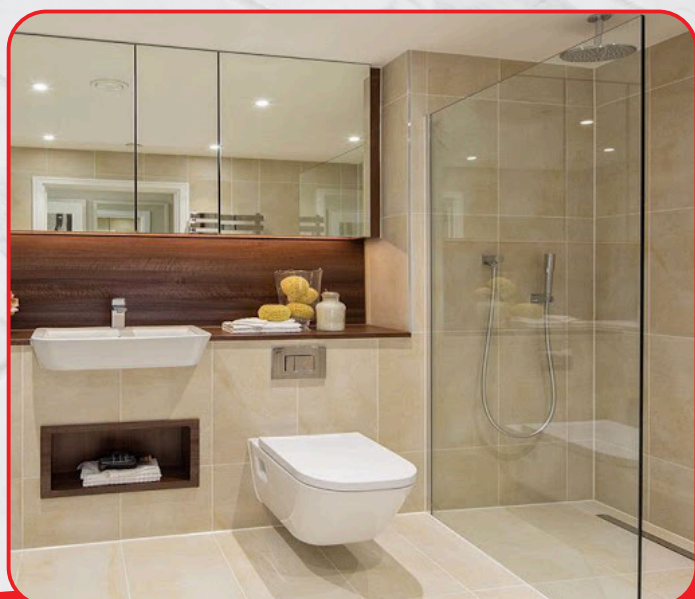
**E-commerce Tile Sales**  
**www.tiles2go.net**



► **High quality bathrooms**



► **Over 100 stunning fixed bathroom displays in store**



**HOMEMATAS**

Unit 1 | Dewhurst Row | Bamber Bridge | PR5 6BB  
*Just around the corner from Matalan*

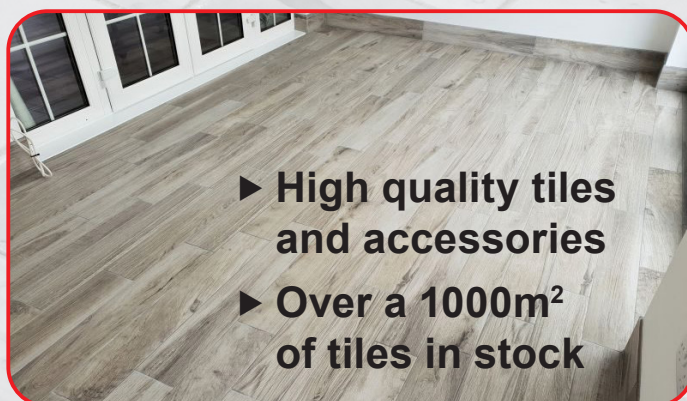
**Award winners of Lancashire County Council's Safe Trader Scheme**

**2014 • 2015**  
**2016 • 2017**  
**2018 • 2019**

**Safe Trader Scheme**

**SERVICES**

- Free on-site survey and quotations
- In-house highly skilled time-served tradesmen
- Project managed from start to completion
- In-store advice from our friendly, knowledgeable staff with over 35 years experience
- Supplied and fitted or supply only
- All work guaranteed



**OPENING HOURS**

**Monday to Friday 8am - 5pm**  
**Saturday 9am - 5pm**  
**Sunday Closed**

# Home Instead

## SENIOR CARE®

*To us, it's personal.®*

# Live well at home, *your way* with Home Instead

We understand that home is where you feel the happiest. If you want to stay living comfortably at home, you can live well, your way with Home Instead.

Home Instead has been at the forefront of specialised home care for the elderly and supporting those being cared for and their families for many years. Founded on personal experience, these family values remain at the core of everything we do 24 years on.

Our award-winning care at home fits around your life - it's tailored, it's flexible and it's adaptable. Whether you're looking for help getting dressed and showered, help around the house or companionship, Home Instead's trained CAREGivers are perfectly matched to you.

We believe age should be celebrated and that everybody should be able to live happily, comfortably and independently at home.

Start your Home Instead journey today.

### Our Services include:

- Companionship
- Dementia care
- and much more
- Palliative Care
- Home Help



Home Instead Senior Care,  
6 Fishergate Court, Preston,  
Lancs, PR1 8QF 01772 72411

[www.homeinstead.co.uk/prestonandsouthribble](http://www.homeinstead.co.uk/prestonandsouthribble)

*"I can not thank Home Instead enough for all their help and support they have offered to us as a family, to allow my father to stay independent for a while longer."*

Samantha M, Daughter of Client



*"We are extremely pleased with the service provided by Home Instead. The care is first class."* Tony, Son of Client



*"Exceedingly good and thoughtful care for client. Excellent support for carers. Remarkably good timekeeping. Willingness to take on many unexpected tasks. Always arrive with a smile."* William A, Husband of Client

## HOME AWARE

Peace of mind for you and your family

Assistive devices for your home, to help you stay safe and to keep your loved ones informed

If you would like to find out more about home aware call us on

**01772724111**





*by*  
**PARIS**  
EVENTS FLOWERS BALLOONS  
WWW.BYPARIS.CO.UK

14 WATERY LN, PRESTON PR2 2NN

APPOINTMENT ONLY  
**07984630247**



**FULLY FITTED  
ROLLER  
GARAGE  
DOORS**

FROM **£895** \* WAS ~~£1,354~~  
INC VAT

\* Offer Valid For Openings Up To 2.6m Wide & Inc:  
2 Remote Controls, 55mm White Slats,  
Internal Manual Override

**WHATS INCLUDED:**

- ACOUSTIC & THERMAL INSULATION
- TWO REMOTE CONTROLS
- EXPERT MEASURING & FITTING
- 24 COLOURS AVAILABLE

Made To Measure...  
**ROLLER GARAGE DOORS**

Garolla can save a lot of space inside your garage. Rolls up vertically into a box. Takes only 8 inches of head-room! Opens vertically so you can park up close to the door. Remotely open/close the garage even from inside your car.

**CALL US TODAY**

**Phone:**  
**01772 804 541**

**Mobile:**  
**07537 149 128**

**GAROLLA**  
ROLLER SHUTTER DOORS  
www.garolla.co.uk

CE Approved

# BOLTON SCHOOL

## Realising Potential



With consistently high examination results, outstanding inspection reports, excellent facilities and incredible extra-curricular opportunities, this friendly school will enable your child to realise their full potential.

[www.boltonschool.org/virtualvisit](http://www.boltonschool.org/virtualvisit)



# THE PRESTIGE

BARBERSHOP



**Download our App.**

Search for "The Prestige"



4 Priory Lane, Penwortham, Preston PR1 0AR  
[www.theprestigebarbershop.co.uk](http://www.theprestigebarbershop.co.uk)



Personal, Professional Gardening Services

Regular garden and grounds maintenance visits tailored to suit which can include:

- Mowing, strimming and edging
- Weeding and weed killing
- Leaf collection
- Lawn feed and weed
- Scarifying
- Hedge cutting & pruning



Also:

- Supply & planting of new plants
- One off clearance
- Green waste removal

Contact us on...

**Tel: 01772 - 617811**

OR

[enquiries@green-scenery.co.uk](mailto:enquiries@green-scenery.co.uk)

[www.green-scenery.co.uk](http://www.green-scenery.co.uk)

6 Wellfield, Longton, PR4 5BX



# LEAFLET DISTRIBUTORS WANTED

PRESTON & CHORLEY

For further information contact

[emmah@euromedia-al.co.uk](mailto:emmah@euromedia-al.co.uk)

# A service that offers the ultimate dream

In 2019, Lucy Fatkin and Jim Fordyce established L&P Care Services with the vision to create a solution to the ultimate dream: that with the right foundations and resources in place, every elderly person can live out their later years, with dignity, security and companionship, in the comfort of their own homes. It was decided that L&P Care Services would commit to uniquely working alongside sons and daughters in the care of their parents, alleviating the complexities and frustrations associated with getting care right for their loved ones through delivering a premium and fully-managed care at home solution. Jim and Lucy know that getting care right for families ultimately starts with creating and nurturing an exemplary culture within the business. Jim Previously owned the largest independent care at home company in Scotland which amongst numerous awards was named "Care at home provider of the year" three times. Lucy years brings years of experience in the care sector and both passionate are about providing the best quality care and support possible.

## A Unique Approach

L&P Care Services is proud to do things differently – our Service Users and staff are at the heart of everything that we do. By focusing on the holistic needs of each client, we tailor our care packages in order to deliver the best care possible. Our approach is unique, but simple:

- We are for self-funding families. By strategically choosing not to engage with council services, it means we can offer a fully bespoke and premium service.
- We go the whole way. We don't believe in remaining at home 'for as long as possible'. Instead, with the right foundations and resources, we believe it possible for elderly people to live out their days with dignity and grace in the comfort of their own homes.
- We provide a fully-managed service. This means we take the stress out of managing care provision yourself, so you can spend



**James Fordyce, Partner**



**Lucy Fatkin, Partner**



**Melissa McKeefery, Care Manager**



**Leah McGlone, Registered Manager**

more quality time as a family.

- We focus on relationships. With visits from 30 minutes or more, we place huge importance on building quality and meaningful relationships. We know that having a consistent face is imperative to providing premium care.
- We are regulated. This means we are regularly reviewed by the CQC, the single regulatory body for social care services.
- We excel at supporting seniors. By focusing on the over 65s, we have become experts in senior care.

## Our Company Values

We have six core values. These are not vacuous values, rather, they play out in our day-to-day experiences of the company. They explain what matters most to us in the pursuit of our mission and vision, and how we find purpose in what we do.

- We have honest conversations. Through embracing transparency, openness and straightforwardness, we pursue truthfulness with each other.

- We are learners. We realise that we're not finished product and are eager to grow and better ourselves. Humility lies at the heart of this.

- We give freely. Generosity comes in all shapes and sizes, and whether it be time, resources, or expertise, we give, share and pay things forward as one family.
- We are interdependent. We live our lives alongside each other and work unitedly, bringing our best everyday, in the knowledge that our colleagues have our back.

- We are self-aware. We know our strengths and blind spots and reflect on our own processes to evaluate, build character, and make good decisions.
- We seek long-term relationships. Loyalty is important to us; as are great endings. Join us once and begin the journey.

**L&P Care Services, Unit12 Chorley Business and Technology Centre, Euxton Lane, Chorley PR7 6TE.**

**Telephone number - 01257 228987**

**Website – Landpcare.co.uk**

## Booths Launches Assam Tea in Support of The Prince's Countryside Fund

Booths, the family owned food retailer has developed a blend of tea to celebrate 10 years of supporting The Prince's Countryside Fund. Booths will donate 10% of the purchase prices of their signature blend of Royal Assam Tea to the Fund.



Tea is at the very root of Booths, as in 1847, Booths founder Edwin Henry Booth started as a tea trader and travelled the world in search of fine teas and coffee to bring back to Lancashire. This expertise has been passed through generations and Booths has blended their range of tea in house for over 170 years. The special tea celebrates 10 years of supporting The Prince's Countryside Fund.

A visit with 3rd generation hill farmers Joe and Hazel Relph at Yew Tree Farm in Borrowdale in the heart of the lakes helped inspire HRH The Prince of Wales to set up a fund to improve the quality of rural life. Chairman Edwin Booth says, "Booths have proudly supported The Prince's Countryside Fund from the very start of the fund 10 years ago. It seems very fitting that we commemorate our support with a special fundraising tea. Food and farming have been at the heart of Booths for well over 170 years and the array of farmers and growers form the very backbone of our business. Securing a brighter future for the countryside has never

been more important."

"There is a real need for education and insight into how products are grown, sown and produced so that we respect not only the food we eat, but place significantly greater value on the people who provide it for us." Pete Read has been the tea blender at Booths for 26 years, "We take tea very seriously; our blends are at the very bedrock of the Booths reputation for sourcing the finest quality food and drink."

"We still buy some of our Assam blend from the original first tea gardens in India, established at Chabua in upper Assam in 1840, just 7 years before Booths started importing tea to Blackpool. The tea we blend in 2020 will share the same malty nose and full flavour as the original blends of EH Booth, that tradition and consistency of quality is the essence of Booths blends." Assam tea is a robust and rich, full flavoured black tea, it has a punch to it, nutty with malt notes, it is a perfect all-rounder, particularly if you like a strong tea with a splash of milk."

# Planning submitted for new homes in Bartle

**A new residential development could be coming to Bartle, north Preston.**

A new residential development could be coming to Bartle, north Preston. Outline planning has been submitted for a residential development with around 1,100 homes on a 46-hectare agricultural site, near Adamson Farm on Rosemary Lane.

Robertson Strategic Asset Management (RSAM) submitted the hybrid planning application to Preston City Council. The application, if approved, will see improved infrastructure and a new roundabout on the Preston Western Distributor Road, which is the new junction currently being developed on the M55.

Acting as site promotor to gain planning and ultimately site disposal, RSAM is working with the landowner, Tom Barron Pension Fund and their advisers Eckersley with DPP Planning appointed as planning consultant.

David Miller, planning and development director at RSAM, said: "The proposed development of the new Bartle Village will see the introduction of a new sustainable community on the outskirts of Preston. Our application supports the Preston and Lancashire City Deal which is delivering a once-in-a-lifetime transformation of the area.

"Central Lancashire has amongst the best



rates of new job creation and will continue to attract investment and residents. The new proposed Bartle Village will deliver a much-needed boost to the availability of quality residential options whilst creating a new village which will create economic, social and environmental benefits." Bartle Village is set to provide a high-quality environment for residents and visitors and includes areas of open space and natural habitats for local wildlife. With excellent connectivity provided via the proposed new road layout, it is anticipated that Bartle Village could be a catalyst to encourage further development and investment in the wider area of North West Preston.

Mark Longley, director at RSAM, commented: "Bartle Village will transform the current greenfield site into a thriving community with significant economic benefits for the wider region. The development will take place over a number of years, should planning be granted, and will enhance the connectivity of the

surrounding area through the creation of the new road layout and improvements. "As Preston continues to grow and prosper it will be essential to meet the housing needs of the workforce. By creating this new village, we are helping to facilitate that growth and continue to attract new investment to the area."

John Francis from DPP Planning said: "RSAM's vision for Bartle Village will create a vibrant and sustainable community, which will have a significant and positive impact on the housing requirements of the region. Developments of this nature are key to achieving the government's levelling up agenda to bring high quality jobs to the North of England and support employers investing in areas such as Lancashire." As part of the proposal, significant environmental improvements will be made to the landscape as well as introducing biodiversity enhancements and improving the overall visual appearance of the site.

# WILD STRINGS

Sustainable fashion from  
Preston-based designer  
uses upcycled materials







New sustainable fashion brand Wild Strings has unveiled its Autumn edit of handcrafted, upcycled pieces – designed to transition the wearer through the changing season, whilst leaving a positive impact on the world that we live in.

Founded by fashion graduate and ex-Boohoo intern, Eleanor Bradley, Wild Strings is rooted in “slow fashion” principles with all pieces made to order, crafted using second-hand clothing, fabric remnants or natural fibres and posted in eco-friendly packaging.

Eleanor, who gained a first-class fashion degree from the University of Central Lancashire, designs clothing for longevity rather than fashion-specific seasons. The Autumn edit features customised oversized denim jackets, embroidered white tees and vibrant tops. All items are



unique as they are made by hand to fit the client, using pre-loved materials.

**Foxglove denim jacket, £100**

Placing a new twist on the oversized denim jacket trend, the Foxglove Denim Jacket is an upcycled Levi’s jacket that has been woven with fabric off-cuts and lines with contrast fabric. Made to order, every single jacket purchased is a complete one-off. One size fits all.

**Zinnia denim jacket, £95**

This classic pale blue denim jacket has an intricate machine embroidered back panel and front detailing featuring a botanical design. One size fits all.

**Juniper denim jacket, £70**

This easy fitting panelled denim jacket features coconut shell buttons and handwarmer pocket. Made from second-hand fabrics, the Juniper Jacket is relaxed, comfy and easy to wear everything. Handmade to order using upcycled materials.

**Embroidered tees, £30**

Wild Strings’ collection of hand-embroidered white T-shirts are the ideal sustainable staple. Each design is embroidered freehand on to a Salvage T-shirt - made from 60% recycled cotton and 40% recycled polyester and carrying a Global Recycle Standard (GRS)



certification. Salvage products are also Fair Wear certified, meaning the pay and conditions of those producing these T-Shirts are fair and just.

Wild Strings founder and designer Eleanor said: “After spending time working in the fast fashion industry I knew that I wanted to create a brand where creativity could thrive and sustainability and re-wearability were at the forefront of the pieces that I created.

“I truly believe that clothes should be loved, treasured and re-worn. I’m on a mission to be part of the change that is needed – taking the manic, fast-paced fashion industry and helping to shape it into a slow and positive impacting space where integrity and improvement are key. I’m excited to showcase my designs.”

For more information about Wild Strings visit [wearwildstrings.co.uk](http://wearwildstrings.co.uk).



# CAPELLI hair

81 Liverpool Road, Penwortham, PR1 0QB | 01772 742634 | [www.capellihair.co.uk](http://www.capellihair.co.uk)

- Family run hairdressers in Penwortham
- Open Tuesday to Saturday
- Services for Women, Men and Children
- 32 years experience



**We have taken measures to be fully compliant with the governments COVID-19 guidelines. Your safety is our priority.**



Visit our Facebook Page  
**@CapelliPenwortham**  
to find out more about us

"Lovely, friendly and knowledgable staff. Made you feel welcome and charges are very competitive. can truly recommend them." - Sheena

"Been going to Trish and Chloe for about 3 years now and won't go anywhere else. They're lovely people who provide great service and are so wonderful with my son when he gets his cut, whenever I go, that he gets excited to go!!!" - Sarah



**20%  
OFF**

**For All  
New Customers**



# Penwortham

## Home Improvements

**10% Discount with this voucher**

New Customers also get a **Free** bottle of wine when you like and share us on **Facebook**

A local small business that endeavours to provide all our customers with the best possible service at a great price.

## Services Provided

- Painting & Decorating
- Wallpapering
- Power Washing Driveways
- Sealing Driveways
- And most small odd jobs

Call Daryl on **07588 295069** for a  
Free No Obligation Quote

Email: [penworthamhi@gmail.com](mailto:penworthamhi@gmail.com)

[www.penworthamhomeimprovements.co.uk](http://www.penworthamhomeimprovements.co.uk)

# From CD cases to fencing

## Lancashire-based plastics manufacturer uses innovative recycling process

Recycled plastics company Kedel Limited uses innovative manufacturing techniques to convert CD and contact lens cases into useful materials for the building trade and into outdoor furniture.

Taking advantage of an increasingly eco-conscious world, Kedel Limited stock an expansive range of recycled plastic building materials and outdoor furniture for commercial and residential use. From cladding to decking, picnic tables to fencing, the company focuses on maintenance free, waterproof and mould resistant products created from recycled materials. Offering more longevity than classic wood materials, by breaking surplus CD and contact lens cases down into pellets, sustainable building products are guaranteed.

“We wanted to have an ethical business that would have a positive impact on our community and the world as a whole.”

says Lewis Walch, company secretary and one of the founding brothers in this family enterprise. “For the last 11 years we have been using the CD and contact lens cases as our main components in our product range, and it uses less energy to do this than what is needed to create ‘virgin plastic’ making it



much better for the environment.” Only 7% of the plastic produced each year is currently recycled, with polystyrene waste taking up about 30% of landfill. Manufacturing their innovative eco-friendly products in a

production unit in Burnley, Kedel melts down CD cases to create plastic pellets before extruding them to produce versatile plastic wood products. All off-cuts are fully recycled back into the manufacturing process to make all of the products 100% eco-friendly.

What is next for the forward thinking, eco-conscious company?

Lewis adds: “We will continue our successful manufacturing strategy recycling CD and contact lens cases, plus packing polystyrene, and supplying a variety of other recycled materials from our partners, as it makes sense to recycle rather than burn or throw it into landfill, both of which are highly polluting.”

Founded in 2010, Kedel is a recycled plastics business launched by three brothers from Bolton. In 2016, the company was shortlisted for the Most Outstanding Small Business Award by Pendle Council.



## Lancashire town is one of the most-loved destinations this year

The most popular Brit holiday destination this year, favoured by the rich and famous, is in fact Lytham St Annes.



Using artificial intelligence (AI) to analyse the top 100 celebrities on Instagram, research by LoveTheSales.com revealed that the Insta-famous are opting to stay closer to home and are embracing the Great British staycation.

Many of them may have rather been in Marbella, but celebs have still had a ball in the UK and enjoyed everything a British break has to offer.

The data reveals the most frequently posted resorts in the UK as loved by the Insta glitterati. TV Essex girl Lucy Mecklenburgh, for example, loves Lytham and posted on her Instagram account this summer a pic of her picnic by the windmill.

Lytham was the only North West destination to feature in the top 10, and topped the poll no doubt thanks to its picturesque beach, its bijou eateries and boutique shops.

### The top ten celebrity-approved staycations were:

- |                    |                    |
|--------------------|--------------------|
| 1. Lytham St Annes | 6. Whitstable      |
| 2. Brighton        | 7. Scotland        |
| 3. Leigh-On-Sea    | 8. North Yorkshire |
| 4. The Cotswolds   | 9. West Sussex     |
| 5. Cornwall        | 10. St. Ives       |

**Tired of your old dentures?  
"I love my new smile...  
and you'll love yours too!"**

**Brook Denture Clinic, 57 Pope Lane,  
Penwortham, Preston PR1 9BY**

**01772 740909**

[www.brookdentures.co.uk](http://www.brookdentures.co.uk)



**Mr. Gordon Brook**  
CDT (Hons), Dip. RCS, Eng. RDT

- ✓ Free consultations
- ✓ Premium dentures from £300
- ✓ Clinical Dental Technician
- ✓ New, full and partial dentures
- ✓ Denture repairs
- ✓ Implant retained dentures
- ✓ Home visits





## North West is home to the 'laziest' DIY-ers

The past few months have certainly showcased our capabilities at tackling DIY jobs around the house – but a survey has found that those living in the North West are actually the worst at DIY.

We are more likely to hire help, with residents in the North West carrying out 292,440 searches for tradespeople in the last 12 months.

It seems we're a region of 'lazy DIY-ers' and if we can hire someone else to do the jobs we keep putting off, then we will!

PriceYourJob.co.uk found that 6,290 searches on average per month are made by eager Brits looking to 'find a trader' or 'hire a tradesman'.

To find the data, PriceYourJob analysed 83 of the largest cities in the UK and the most common DIY jobs (also trading professions) to find out which one is most popular in each city. PriceYourJob used Google search data over the last 12 months.

Regionally, those living in the North West appear to be the least capable at doing DIY jobs in the home, as they search for hiring tradesmen more than any other area.

People in the West Midlands followed with 267,960 searches.

Residents in Wales seem to be the most DIY savvy, with just 23,400 collective searches for trading professionals.

### Most popular jobs Brits hire help for:

- Painter – 48,529 searches
- Carpenter – 9,790 searches
- Decorator – 6,460 searches
- Gardener – 2,920 searches
- Tiler – 1,660 searches

# NEW VEGAN CANDLE COLLECTION *From Delilah Chloe*

New Lancashire-based artisan home fragrance brand, Delilah Chloe, has unveiled its debut collection of versatile scents, created to take you on a journey from balmy summer days and nights, through to the cosiness of early autumnal evenings.

Made from 100% luxurious coconut and soy wax and essential oils, all candles are vegan and toxin-free. Five scents are featured in the debut collection, designed to bring the eclectic scents of summer into your home all year round, transport you to an indulgent spa break or set the scene for a cosy evening at home. They include:

## **Seven Seas - fragranced with Bergamot and Amber, £15**

Staycationing this year? Let Seven Seas transport you to a perfect holiday paradise at the strike of a match. Reminisce about those days and evenings relaxing by the shore with top notes of bergamot and orange, heart notes of rich amber and base notes of coconut, vanilla and almond. A beautiful balmy scent, this fragrance offers that ultimate escapism all year round.

## **Serenity - fragranced with Lemongrass and Ginger, £15**

Transform your bathroom into a luxurious spa with Serenity – created for those moments of pure relaxation. Fragranced with lemongrass, ginger and with base notes of patchouli, white wood and vanilla, Serenity will help you to de-stress,



unwind and rejuvenate your aura whenever you need to indulge in a little downtime.

## **After Hours - fragranced with Tobacco and Oak, £15**

Set the mood as dusk starts to fall with the sensual, cologne inspired After Hours. With a warm aromatic blend of smoky oak and sweet musky tobacco, After Hours is a grown-up scent that will fill your home with warmth. With top notes of sweet tobacco, heart notes of spices and cognac and base notes of oak, ebony, incense and musk, this fragrance is the perfect mood setter for cosy summer evenings and as autumn starts to draw in.



## **Botanical - fragranced with Plum and Patchouli, £15**

Botanical is designed to bring those Summer days inside, all year round! With fruity floral scents and a freshness of those Summer mornings, Botanical features top notes of plum, cassis and cinnamon, heart notes of jasmine and rose and base notes of patchouli, vanilla and moss.

## **Islands – fragranced with Citrus and Basil, £15**

Let Islands transport you to a place of pure happiness and invigoration with an uplifting combination of lime, mandarin, basil and vetiver. Another all rounder that will fill your home with a mood boosting hit of freshness and zest.

All fragrances in the Delilah Chloe collection are also available as wax melts and reed diffusers. Candles are 180ml with an approximate burn time of 35 hours.

Visit [delilahchloe.com](http://delilahchloe.com) for more information.

# *Get the Look – Dulux Colour of the Year*

**Brave Ground and its complementing palettes represent the natural, earthy, elements found around us every day...**

It's the moment interiors experts have been waiting for – the Dulux ColourFutures Colour of the Year for 2021 has been announced.

This time it's a tone called "Brave Ground", a milky coffee hue with a hint of grey. Teamed with the colour palettes Earth, Trust, Timeless and Expressive, Brave Ground is a warm and neutral shade.

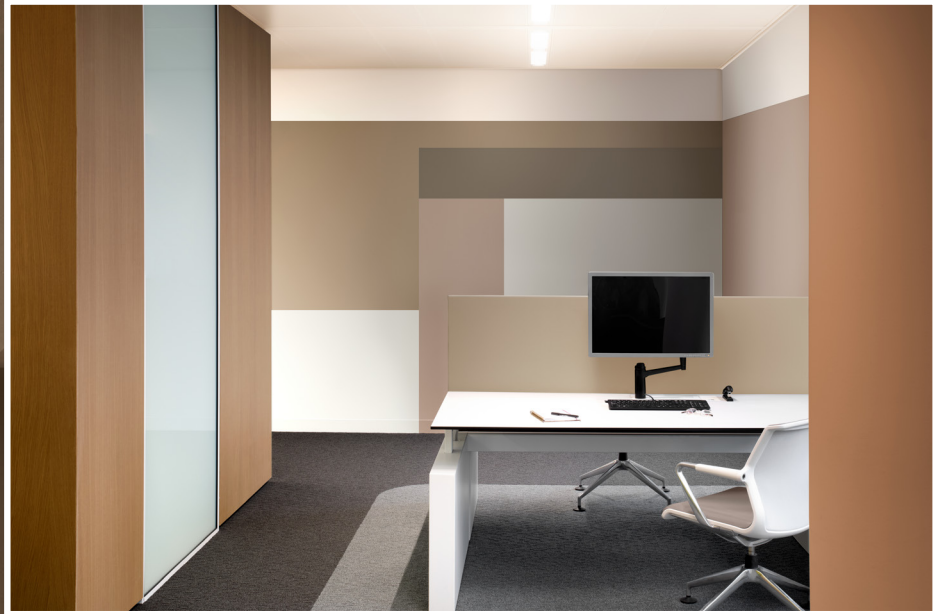
The Creative Director of Dulux UK, Marianne Shillingford, said: "As a result of the global pandemic many people's priorities are shifting significantly, to focus much more on their well-being.

"Colour can play a significant role in this – and with the calming, restorative and natural tones of our ColourFutures 2021 palettes we hope to empower professionals to create spaces where occupants can reflect, recharge and recalibrate."

Here, we feature some key products from The Rug Seller and Apollo Blinds to show how to Get the Look with rugs and blinds...







## DULUX COLOUR PALETTES:

### EARTH -

Echoing the tones of the sea, the sky and the soil, these earth shades provide a connection to the natural world around us. Bringing the outside in, they are authentic and grounding colours that work naturally together.

### TRUST -

Earth tones from across the globe, these unifying shades reflect everyone. Warm neutral greys and browns, these colours complement each other and encourage connection, collaboration and a sense of harmony in spaces.

### TIMELESS -

Inspiring shades of yellows and ochres, alongside soft neutrals, these are tones that can help create a backdrop that embraces old and new. Energizing without being overpowering, they bring positivity and balance to a space.

### EXPRESSIVE -

Stand-out shades of reds and pinks, balanced with soft neutrals, these are colours that can add verve and vitality, allowing professionals to create spaces that energize, and surprise.

## *Incorporate the Dulux colour of the year into your home*

### THE RUG SELLER:



*Katherine Carnaby Plain Chrome Designer Rug, from £569*



*Malta Rug by Kathy Ireland, from £89.40*



*Spiral Circular Round Wool Rugs in Beige, from £209.99*

### APOLLO BLINDS:



*Duette® blind featuring a multi-zone operating system. Prices start at £162*



*Twilight blind with alternating stripes of sheer and solid fabric. Prices start at £134*



*Made-to-measure Roller blind. Prices start at £77*

# GET THE DEAL

LANCASHIRE

would like to thank our wonderful local businesses for their continued support

## David H Myers Opticians

34 Liverpool Road, Penwortham, Preston PR1 0DQ

**01772 752400**

[www.davidhmyers.com](http://www.davidhmyers.com)

## By Paris

14 Watery Ln, Preston PR2 2NN

**07984630247**

[www.byparis.co.uk](http://www.byparis.co.uk)

## Walker Windows

Dockland House, Anchorage Business Park, Chain Caul Way, Riversway, Preston, PR2 2YL

**01772 725888**

[www.walkerwindows.co.uk](http://www.walkerwindows.co.uk)

## Green Scenery

6 Wellfield, Longton PR4 5BX

**01772 617811 / 07794 309216**

[www.green-scenery.co.uk](http://www.green-scenery.co.uk)

## Homematas

Unit 1, Dewhurst Row, Bamber Bridge, Preston PR5 6BB

**01772 311 113**

[www.homematas.co.uk](http://www.homematas.co.uk) [www.tiles2go.net](http://www.tiles2go.net)

## L&P Care Services

Unit12 Chorley Business and Technology Centr Euxton Lane Chorley PR7 6TE.

**01257 228987**

[Landpcare.co.uk](http://Landpcare.co.uk)

## Garolla

### Roller Shutter Doors

**01772 804 541 / 07537 149 128**

[www.garolla.co.uk](http://www.garolla.co.uk)

## Brook Denture Clinic

57 Pope Lane, Penwortham, Preston PR1 9BY

**01772 740909**

[www.brookdentures.co.uk](http://www.brookdentures.co.uk)

## Bolton School

Chorley New Road, Bolton, BL1 4PA

**01204 840201**

[www.boltonschool.org](http://www.boltonschool.org)

## Capelli Hair

81 Liverpool Road, Penwortham, PR1 0QB

**01772 742634**

[www.capellihair.co.uk](http://www.capellihair.co.uk)

## Home Instead Senior Care

6 Fishergate Court, Preston PR1 8QF

**01772 72411**

[www.homeinstead.co.uk/prestonandsouthribble](http://www.homeinstead.co.uk/prestonandsouthribble)

## Penwortham Home Improvements

**07588295069**

[www.penworthamhomeimprovements.co.uk](http://www.penworthamhomeimprovements.co.uk)

## The Prestige Barbourshop

4 Priory Lane, Penwortham, Preston PR1 0AR

**T: 01772 742507**

[www.theprestigebarbershop.co.uk](http://www.theprestigebarbershop.co.uk)



Choosing the right person or company to provide care and support for you or your loved one is not an easy decision especially in these uncertain times. You need someone who is caring with right knowledge and skills, someone you can rely upon and most importantly someone you can trust. You can stay with your pet, keep in touch with friends and family and eat the food you want. Having a care worker on hand to provide support and companionship provides a much-improved quality of life for our service users who have previously struggled with day to day routines of life.

We offer a premium ethical service that provides the very best care and support. We heavily invest in our staff providing 1st class training and paying them market leading rates of pay. This allows us to have a stable, highly trained workforce providing safe reliable loving care and support.

We ensure that our team is fully DBS checked and trained to the highest standards for your every need. We are following the Government’s guidance on delivering home care during this time to ensure that we are minimising the risk of spreading the illness whilst still providing our vital service to our service users so that they can stay safe and well at home. Some of the measures we have in place to ensure the safety of both Service Users and Homecarers include the use of Personal Protection Equipment (PPE) and robust infection control training and hygiene measures which our Homecarers are strictly following.

Due to the global pandemic, all of our staff have had up to date training on Covid 19 and will follow the Government’s guidelines to ensure the safety of both yourselves and our safety.

We can provide:

- ✓ ASSISTED APPOINTMENTS ✓ ASSISTED OUTINGS ✓ ASSISTED SHOPPING ✓ GENERAL DOMESTIC DUTIES ✓ MEAL PREPARATION ✓ SIT-IN SERVICE ✓ WAKE AND WATCH ✓ WELFARE CHECKS (POP IN SERVICE) ✓ PERSONAL CARE ✓ MEDICATION

We are:

- ✓ FULLY INSURED ✓ FULLY TRAINED ✓ DBS (POLICE) CHECKED ✓ CQC REGISTERED PROVIDERS & MANAGERS



Telephone  
**01257 228987**

Head Office  
L&P Care Services,  
Chorley Business & Technology Centre,  
Euxton Lane, Chorley PR7 6TE

landpcare.co.uk

